

Swing Check Valve

AKR/AKRS

PN 63-160
DN 80/80 to 300/250

Type Series Booklet



Legal information/Copyright

Type Series Booklet AKR/AKRS

All rights reserved. The contents provided herein must neither be distributed, copied, reproduced, edited or processed for any other purpose, nor otherwise transmitted, published or made available to a third party without the manufacturer's express written consent.

Subject to technical modification without prior notice.

© KSB SE & Co. KGaA, Frankenthal 17/01/2018

Contents

Check Valves and Strainers	4
Swing Check Valves to DIN/EN	4
AKR/AKRS	4
Main applications.....	4
Fluids handled	4
Operating data.....	4
Body materials.....	4
Design details	4
Product benefits.....	4
Related documents	4
Purchase order specifications	5
Pressure/temperature ratings.....	5
Materials.....	6
Dimensions and weights.....	7

Check Valves and Strainers

Swing Check Valves to DIN/EN

AKR/AKRS



Main applications

- Fossil-fuelled power stations
- Process engineering
- Boiler feed applications
- Boiler recirculation
- Chemical industry
- Petrochemical industry
- Sugar industry
- Mining
- Descaling units
- Pulp and paper industry
- Shipbuilding
- Snow-making systems
- Nuclear power stations

Fluids handled

- Water
- Steam
- Other non-aggressive fluids such as gas or oil on request.

Operating data

Operating properties

Characteristic	Value
Nominal pressure	PN 63 - 160
Nominal size	DN 80/80-300/250
Max. permissible pressure [bar]	160
Min. permissible temperature [°C]	-10
Max. permissible temperature [°C]	+550

Selection as per pressure/temperature ratings (⇒ Page 5)

Body materials

Overview of available materials

Material	Material number	Temperature limit
P 250 GH	1.0460	≤ 450 °C
13 CrMo 4-5	1.7335	≤ 550 °C

Design details

Design

- Body of forged or welded steel construction
- Pressure seal design
- Internally mounted hinge pin
- The valves satisfy the safety requirements of Annex I of the European Pressure Equipment Directive 2014/68/EU (PED) for fluids in Groups 1 and 2.
- The valves do not have a potential internal source of ignition and can be used in potentially explosive atmospheres, Group II, category 2 (zones 1+21) and category 3 (zones 2+22) to ATEX 2014/34/EU.

Variants

- Other flange designs
- Other butt weld end versions
- Inspections to technical codes such as TRD/TRB/AD2000 – German Steam Boiler / Pressure Vessel Regulations – or to customer specification

Product benefits

- Added safety due to pressure seal design providing increased sealing to atmosphere: The higher the pressure in the valve body, the tighter the cover joint. Very low risk of leakage, particularly at high pressures and temperatures. Compact design.
- Reliable, tight shut-off and service-friendly design due to flexibly mounted valve disc. Precise alignment of valve disc with body seat; valve disc is easy to replace.
- Hard-faced seat/disc interface made of wear-resistant and corrosion-proof 17 % chrome steel or Stellite for long service life and high functional reliability.

Related documents

Information/documents

Document	Reference number
AKG-A/AKGS-A type series booklet (gate valve in pressure seal design)	7338.1
Operating manual	0570.81

Purchase order specifications

Please specify the following information in all enquiries or purchase orders:

1. Type
2. Nominal pressure
3. Nominal size
4. Operating pressure
5. Differential pressure
6. Operating temperature
7. Material
8. Fluid handled
9. Flow rate
10. Pipe connection
11. Variants
12. Reference number

Always indicate the original serial number and the year of construction when ordering spare parts.

Pressure/temperature ratings
Flanged ends, type AKR (to EN 1092-1)¹⁾

Permissible operating pressures [bar]²⁾

PN	Material	Material number	[°C]																		
			RT ³⁾	100	150	200	250	300	350	400	450	460	470	480	490	500	510	520	530	540	550
63	P 250 GH	1.0460	63,0	58,5	55,5	52,5	48,0	43,5	40,5	37,5	20,7	-	-	-	-	-	-	-	-	-	-
	13 CrMo 4-5	1.7335	63,0	63,0	63,0	63,0	63,0	63,0	60,0	56,7	53,1	50,5	47,9	45,4	42,8	41,1	34,8	28,2	23,4	18,3	14,7
100	P 250 GH	1.0460	100,0	92,8	88,0	83,3	76,1	69,0	64,2	59,5	32,8	-	-	-	-	-	-	-	-	-	-
	13 CrMo 4-5	1.7335	100,0	100,0	100,0	100,0	100,0	95,2	90,0	84,2	80,2	76,1	72,0	68,0	65,2	55,2	44,7	37,1	29,0	23,3	-
160	P 250 GH	1.0460	160,0	148,5	140,9	133,3	121,9	110,4	102,8	95,2	52,5	-	-	-	-	-	-	-	-	-	-
	13 CrMo 4-5	1.7335	160,0	160,0	160,0	160,0	160,0	160,0	152,3	144,0	134,8	128,3	121,8	115,3	108,8	104,3	88,3	71,6	59,4	46,4	37,3

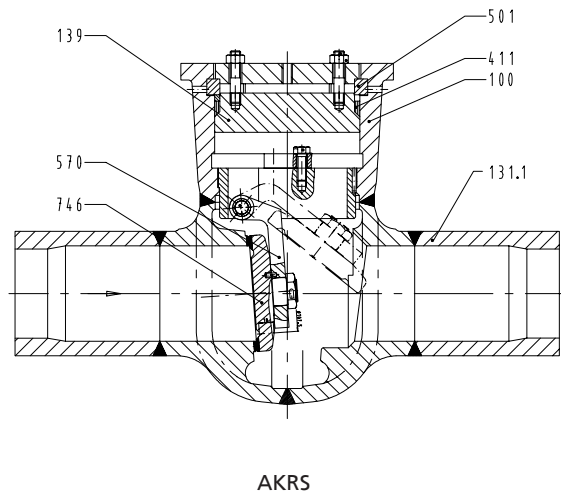
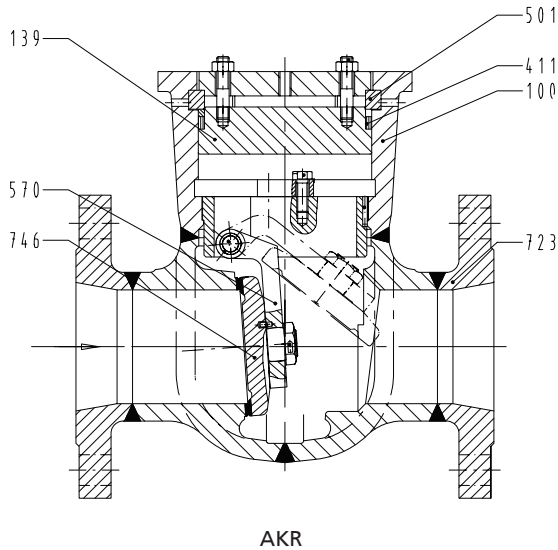
Butt weld ends, machined, type AKRS¹⁾

Permissible operating pressures [bar]²⁾

PN	Material	Material number	[°C]																	
			Up to 120	200	250	300	350	400	425	450	475	500	510	520	530	540	550			
63/160	P 250 GH	1.0460	160	160	140	120	100	80	72	60	-	-	-	-	-	-	-	-	-	-
	13 CrMo 4-5	1.7335	160	160	160	160	160	150	147	145	140	118	100	80	67	52	42	-	-	-

1) Operating pressures to DIN 2401 are also permissible.
 2) The valves are suitable for temperatures down to -10 °C.
 3) RT: room temperature (-10 °C to +50 °C)

Materials



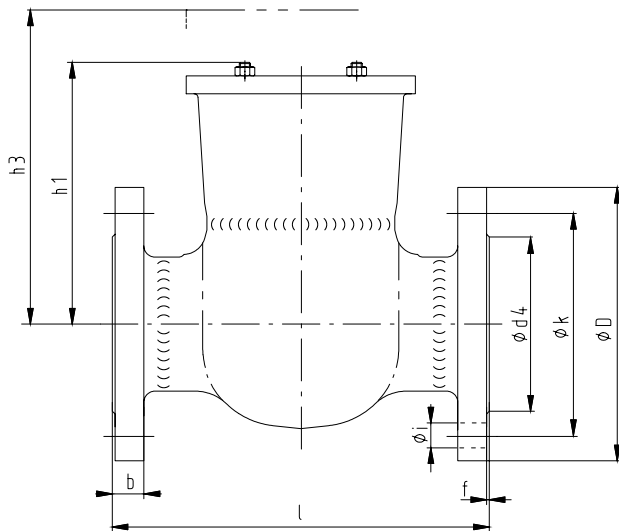
Parts list

Part No.	Description	Temperature [°C]	Material	Material number	Note
100	Body	≤ 450 °C	P 250 GH	1.0460	Body die-forged and welded
		≤ 550 °C	13 CrMo 4-5	1.7335	
723	Flange	≤ 450 °C	P 250 GH	1.0460	-
		≤ 550 °C	13 CrMo 4-5	1.7335	
131.1	Connection branch	≤ 450 °C	P 250 GH	1.0460	Material can be matched to pipeline material.
		≤ 550 °C	13 CrMo 4-5	1.7335	
746 ⁴⁾	Valve disc	≤ 450 °C	P 250 GH	1.0460	-
		≤ 550 °C	13 CrMo 4-5	1.7335	
139	Bonnet	≤ 450 °C	P 250 GH	1.0460	-
		≤ 550 °C	13 CrMo 4-5	1.7335	
Seat/disc interface	Body	≤ 450 °C	Hard-faced	1.4115	Hard-faced
		≤ 550 °C	Stellite hard-faced	-	
	Valve disc	≤ 550 °C	Stainless steel hard-faced	1.4370	
411 ⁴⁾	Joint ring	≤ 550 °C	Pure graphite	-	-
501	Segmental ring		13 CrMo 4-5	1.7335	-
570	Hanger arm		13 CrMo 4-5	1.7335	-

4) Recommended spare parts

Dimensions and weights

Dimensions and weights of AKR



AKR

Dimensions [mm] and weights [kg]

PN	DN/S ⁵⁾⁶⁾	l	ø D	ø k	No. of bolt holes z	Bolt hole dia. i	ø d ₄ × f	b	h ₁	h ₃ ⁷⁾	[kg]
63	80/80	310	215	170	8	22	138 × 3	28	190	290	53
	100/100	350	250	200	8	26	162 × 3	30	215	335	78
	125/125	400	295	240	8	30	188 × 3	34	265	415	115
	150/150	450	345	280	8	33	218 × 3	36	315	495	160
	200/200	550	415	345	12	36	285 × 3	42	410	635	232
	250/250	650	470	400	12	36	345 × 3	46	585	825	545
100	80/80	310	230	180	8	26	138 × 3	32	190	290	58
	100/100	350	265	210	8	30	162 × 3	36	215	335	83
	125/125	400	315	250	8	33	188 × 3	40	265	415	124
	150/150	450	355	290	12	33	218 × 3	44	315	495	174
	200/200	550	430	360	12	36	285 × 3	52	410	635	265
	250/250	700 ⁸⁾	505	430	12	39	345 × 3	60	585	825	595
160	80/80	390	230	180	8	26	138 × 3	36	190	290	63
	100/100	450	265	210	8	30	162 × 3	40	215	335	87
	125/125	525	315	250	8	33	188 × 3	44	265	415	132
	150/150	600	355	290	12	33	218 × 3	50	315	495	190
	200/200	750	430	360	12	36	285 × 3	60	410	635	315
	250/250	900	515	430	12	42	345 × 3	68	585	825	610

Mating dimensions as per standard

Face-to-face lengths: PN 63 and PN 100 to EN 558-1/26
PN 160 see table

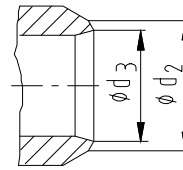
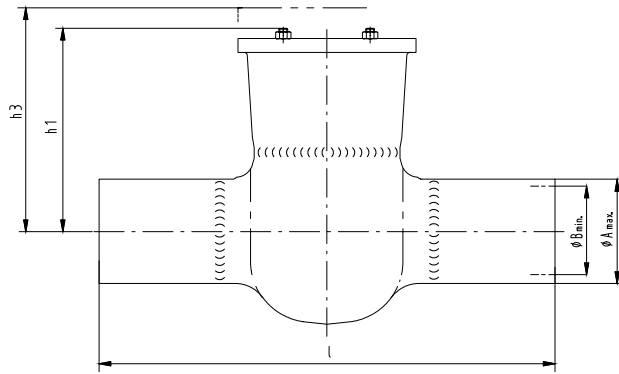
Flanges: Mating dimensions to EN 1092-1

Flange facing: Type B

Other flange designs

- For example, undrilled with groove (type D) or recess (type F) to EN 1092-1 at both ends
- Flanges to DIN
- Other flange designs on request

5) Nominal size/seat diameter
6) Model with reduced bore on request
7) Vertical clearance for removal
8) Contrary to EN 558-1/26

Dimensions and weights of AKRS


AKRS

Butt weld end

Dimensions [mm] and weights [kg]

PN	DN/S ⁹⁾¹⁰⁾	l	Butt weld ends, unmachined		Butt weld ends, machined						h ₁	h ₃ ¹¹⁾	[kg]	
			ø A _{max.}	ø B _{min.}	ø d ₂	PN 63		PN 100		PN 160				
						ø d ₃	Pipe dimensions	ø d ₃	Pipe dimensions	ø d ₃				Pipe dimensions
63/160	80/80	390	95	74	90	81	88,9 × 4,0	81	88,9 × 4,0	76,5	88,9 × 6,3	190	290	49
	100/80	450	120	92	115	104	114,3 × 5,0	104	114,3 × 5,0	98,5	114,3 × 8,0	190	290	53
	100/100	450	120	92	115	104	114,3 × 5,0	104	114,3 × 5,0	98,5	114,3 × 8,0	215	335	70
	125/100	525	145	105	141	130,5	139,7 × 4,5	127	139,7 × 6,3	120,5	139,7 × 10,0	215	335	83
	125/125	525	145	115	141	130,5	139,7 × 4,5	127	139,7 × 6,3	120,5	139,7 × 10,0	265	415	103
	150/125	600	175	138	170	156,5	168,3 × 5,6	154	168,3 × 7,1	144,5	168,3 × 12,5	265	415	108
	150/150	600	175	138	170	156,5	168,3 × 5,6	154	168,3 × 7,1	144,5	168,3 × 12,5	315	495	140
	175/150	675	195	160	195	180,5	193,7 × 6,3	176,5	193,7 × 8,8	167	193,7 × 14,2	315	495	155
	200/150	750	225	180	222	204,5	219,1 × 7,1	199,5	219,1 × 10,0	189	219,1 × 16,0	315	495	166
	200/200	750	225	180	222	204,5	219,1 × 7,1	199,5	219,1 × 10,0	189	219,1 × 16,0	410	635	210
	250/200	900	280	225	276	255	273,0 × 8,8	248,5	273,0 × 12,5	231,5	273,0 × 22,2	410	635	250
	250/250	900	280	225	276	255	273,0 × 8,8	248,5	273,0 × 12,5	231,5	273,0 × 22,2	585	825	520
300/250	1050	330	260	325	301	323,9 × 11,0	295,5	323,9 × 14,2	276,5	323,9 × 25,0	585	825	560	

Mating dimensions as per standard

- Face-to-face lengths: EN 12982/26
- Butt weld ends: see table
- Weld grooves: DIN EN ISO 9692-1 (1.3 + 1.5)

Different designs of butt weld ends and weld groove forms are possible, but only within the dimensions A_{max.} and B_{min.}.
 Butt weld ends to EN 12627 are possible.

9) Nominal size/seat diameter
 10) Model with reduced bore on request
 11) Vertical clearance for removal



KSB SE & Co. KGaA
Bahnhofplatz 1 • 91257 Pegnitz (Germany)
Tel. +49 9241 71-0
www.ksb.com